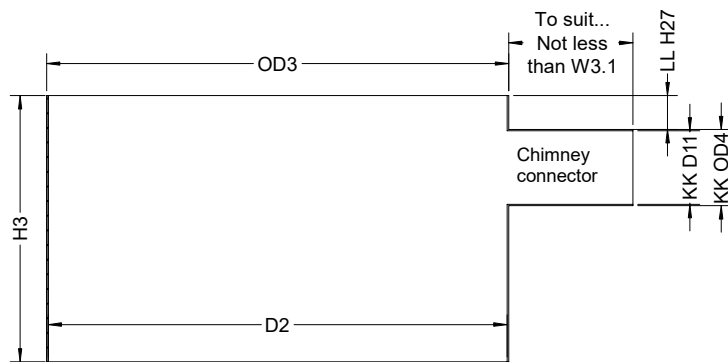
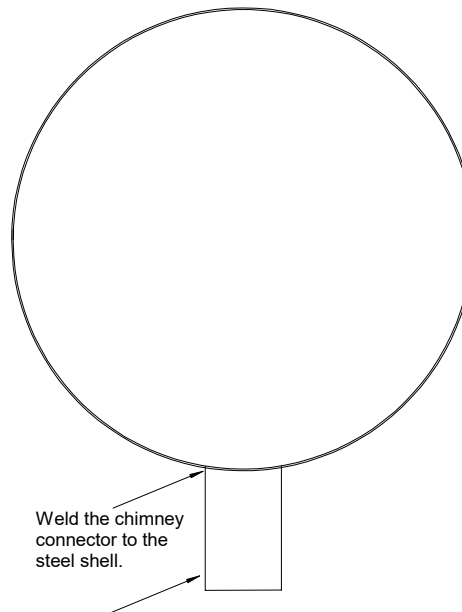
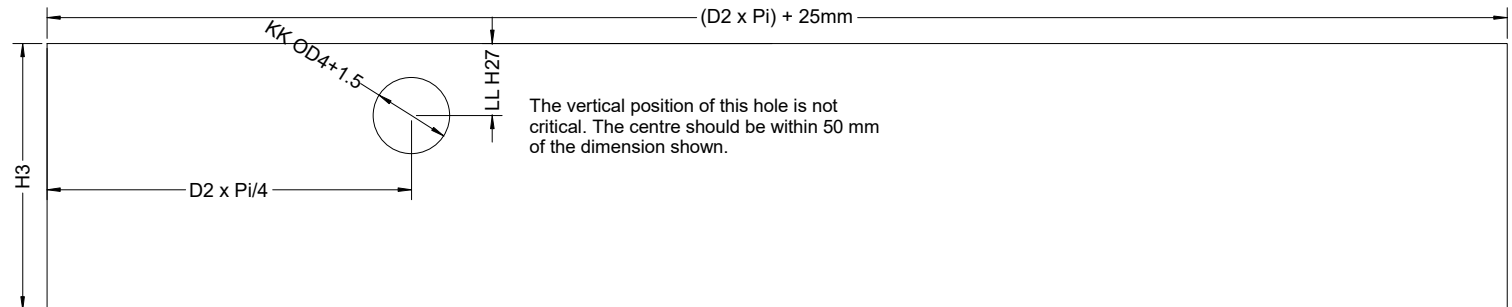


Rear View: Steel Liner and Pot Support

For the vertical position of the hole see the note below.



4mm Steel Liner and Pot Support



The position of the joint is not random. It should be 90 to 100 degrees from the chimney as viewed from the top and shown here.

D2 with 25mm overlap.

Do not weld the overlap joint.

Drill 3 x 6mm holes through the joint and fix it with M6x1 SS Bolts.

Weld the nut to the outside face with two small welds.

Weld the chimney connector to the steel shell.

Length as appropriate. It must accept a chimney of diameter D9, adapt as necessary for local materials.

If the chimney is to be fastened with screws, extend this part 75mm beyond the stove body, at least.

Note: After the steel shell is placed and the masonry work is finished, with or without insulating, remove the 3 x M6 bolts.

The steel shell will now be free to expand and contract without stressing the masonry work. Instead, the 25mm overlap will increase and decrease as necessary.

			UG-Simba Institutional Stove
			Features:
			Steel shell and chimney connector tube
			Material: SS 304 x 4mm
			Quantity 1 per stove
			Scale: Not to scale
Version: 1.0	Date: 2023-11-01	Initials CPP	Drawn By: C Pemberton-Pigott
Drawing No. UG-Simba-17 Steel Shell, v.1			Part STEEL SHELL